

# IRIS

## IRIS-090 / 1090 / 490

316 Marine Grade Stainless Steel Static Pipe Style Cameras - Analogue / HD-TVI  
and IP Formats



### Key Features:

- Available in multiple formats to suit your requirements
- Machined from 316 Marine Grade Stainless Steel.
- High Polish Finish
- High Definition 5MP Resolution (IRIS490 IP Model)
- 20m Optional Cable Extension (IP68)
- High Definition 2MP Resolution (Analogue Hi-Def Model)
- High Resolution 1000 TVL (Analogue Model)
- Built In Infra Red LED Illumination (10m /20m Range)
- Submersible Option Available
- PoE IEEE.802.3af (IRISS490 IP Model)
- Compatible with Raymarine / Axiom (L2 and Higher)
- Compatible with Navico MFD's inc. SIMRAD, LOWRANCE and B&G
- Extremely Low Power Consumption
- IP66 Environmental Protection

### Applications:

- Work Boat & Commercial Shipping
- Luxury Motor Yachts
- Fishing & Sports Fishing
- Ferry Boats & Passenger Vessels
- Law Enforcement & Emergency Services
- Rapid Deployment Applications
- Vehicle & Transport Applications

† May Require Additional Converter Hardware Depending on Model Of MFD

Iris's x90 range of marine grade stainless steel cameras are available in multiple formats and deliver the highest quality video to suit your application.

The range comprises a high resolution analogue solution designed for maximum compatibility with most marine chart plotters (IRISS090), a high definition TVI model which delivers 1920x1080 resolution in real time† (IRISS1090) - compatible directly with Garmin 9000 series plotters and a high definition 5MP IP camera (IRIS490) which is directly compatible with Raymarine chart plotters (running LH2 / LH3 software and above) Navico MFD's (Simrad NSS, NSO and NSX and B&G) and Furuno TZT chart plotters. An optional 20m IP68 Extension cable is also available for the IRIS490 model.

The x90's 316 stainless steel housing provides the ultimate protection in the harsh marine environment, and is therefore the perfect solution for deck monitoring aboard work boats, fishing vessels and passenger vessels, whilst fitting in equally as well with the high end aesthetic of luxury vessels and mega yachts.

Equipped with high power infra red LED's, the x90 series provides high definition video cover even at night to a range of 20 meters.

The x90 range is small enough to provide unobtrusive surveillance and also for use in areas where space is tight, such as engine rooms or anchor wells.

Whether you need a high quality and rugged camera as part of your on board surveillance system, for engine room, deck and companion way monitoring or as a robust and stylish docking or backup camera, the IRISx90 range of cameras is the perfect solution, favoured by luxury boat owners and commercial vessel operators alike.

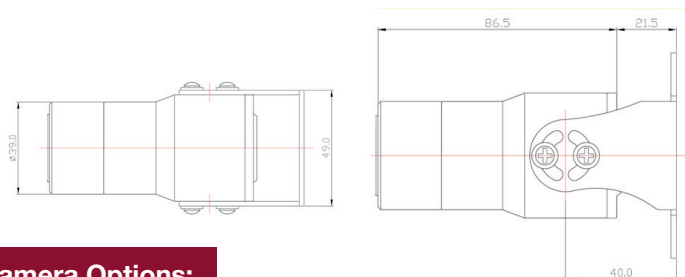


# IRIS

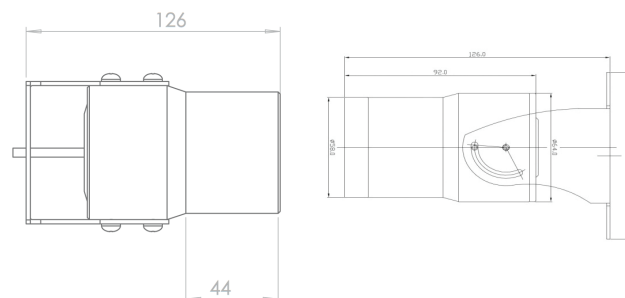
# IRIS-090 / 1090 / 490

316 Marine Grade Stainless Steel Static Pipe Style Cameras - Analogue / HD-TVI and IP Formats

## IRIS090 Dimensions



## IRIS490 / 1090 Dimensions



## Camera Options:

| Model No. | Format   | Resolution  | Lens                        | Horizontal Field of View            |
|-----------|----------|-------------|-----------------------------|-------------------------------------|
| IRIS090   | Analogue | 1000TVL     | 3.6mm Standard 2.8mm Option | 3.6mm: 80° HFOV<br>2.8mm: 120° HFOV |
| IRIS1090  | HD-TVI   | 1920 x 1080 | 3.6mm Standard 2.8mm Option | 3.6mm: 80° HFOV<br>2.8mm: 120° HFOV |
| IRIS490   | IP       | 5MP         | 3.6mm Standard 2.8mm Option | 3.6mm: 80° HFOV<br>2.8mm: 120° HFOV |

## Specifications:

|                          | IRIS090   | IRIS1090  | IRIS490   |
|--------------------------|---|---|---|
| Sensor                   | 1/3" Sony CCD Sensor  |   | 1/4" CMOS Sensor  |
| Resolution               | 1000 TVL  | 1920x1080   | Variable - 5MP Max  |
| Interface                | NA  |   | RJ45 10/100 Base T Ethernet   |
| Video Processing         | 1VP~P CVBS Composite Video 75Ω                                      | HD-TVI / HD-CVI / AHD Switchable  | H.264 Codec / Dual Stream   |
| Protocols / Video Format | PAL / NTSC Selectable   | HD-TVI / HD-CVI / AHD   | TCP/UDP/HTTP/Multicast/UPnP/NTP/RTSP/ONVIF  |
| Onvif                    | NA  |   | Profile S v2.4  |
| Bitrate                  | NA  |   | VBR / CBR 32kbps ~ 8Mbps  |
| Illumination             | 6 x 850nm Infra Red - 10 meter Range                                | 2 x High Power Infra Re 850nm - 20 Meter Range  |   |
| Lens / Field of View     | 3.6mm Standard (80° HFOV) / 2.8mm Option                            |   |   |
| Mirroring                | Horizontal & Vertical - Configure via OSD Menu                      |   | Horizontal & Vertical - Configure via Browser   |
| Automatic Gain Control   | Supported / Multiple Levels   |   |   |
| Compatibility            | All MFD's with Composite Video Input, TV via AV Input, CMAC Systems | MFD's with Digital (HDMI/DVI) Input with TVI-HDMI Convertor, MFD's via IRIS NVR/HVR, CMAC Systems | Raymarine / Axiom (LH2 or higher), NAVICO MFD's inc SIMRAD / LOWRANCE, B&G, PC based systems, MFD's with digital (HDMI / DVI) Input, MFD's via IRIS NVR/HVR, IE Browser, CMAC Systems, Furuno TZT |
| Operating Temperature    | -30 ~ +60 °C  |   |   |
| Connections              | Video: BNC 75Ω Female Connector / DC Power Socket                   |   | Water Resistant RJ45 Socket / DC Power Socket / Female BNC (1090)   |
| Material                 | 316 Stainless Steel   |   |   |
| Power                    | 12VDC < 200mA Max.  |   | PoE IEEE802.3af / 12VDC <200mA Max.   |
| Weight & Dimensions      | 0.660Kg / 108mm x 49mm  | 1.170Kg / 126mm x 64mm  |   |
| Environmental            | IP66  | IP66 Standard / IP68 Submersible Option Available   |   |